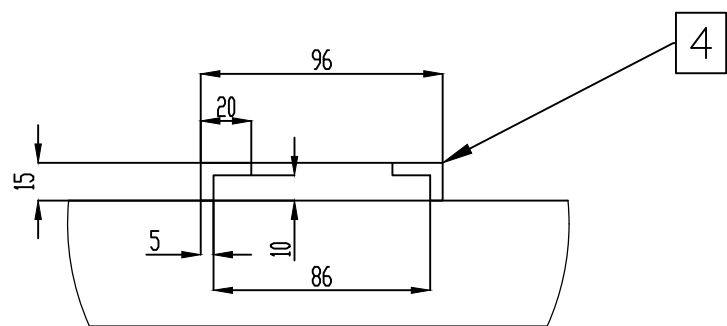
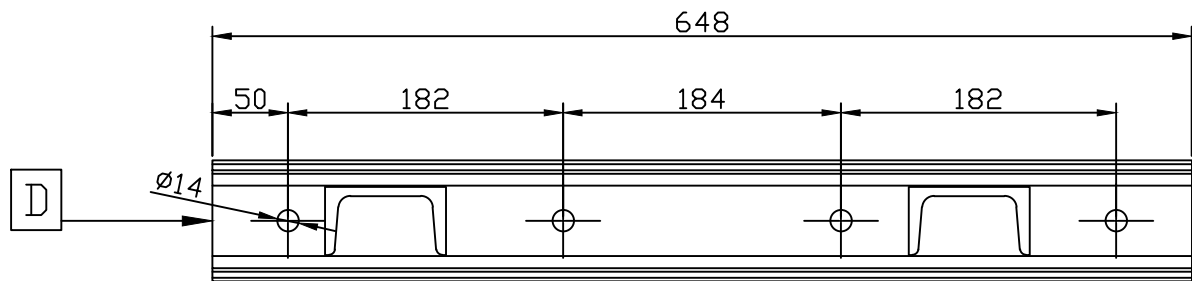
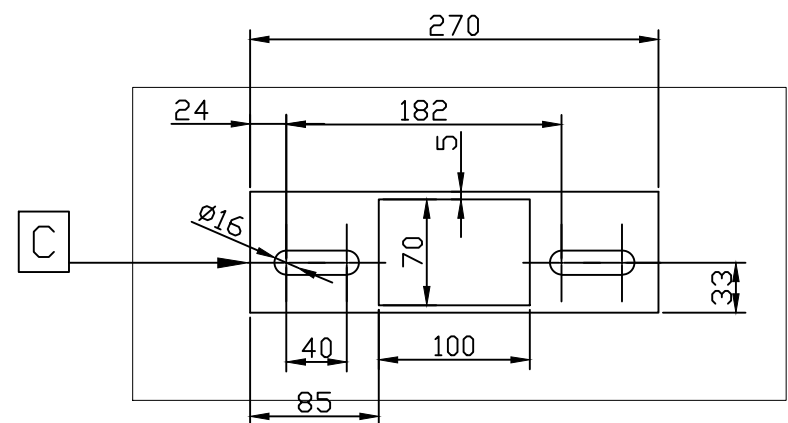
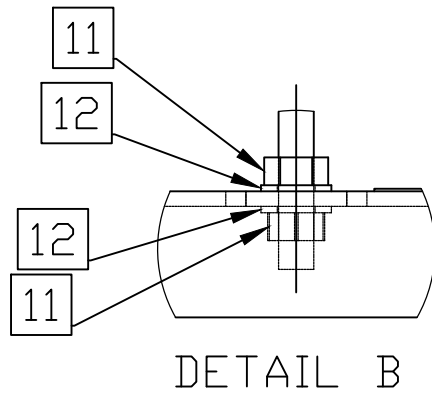
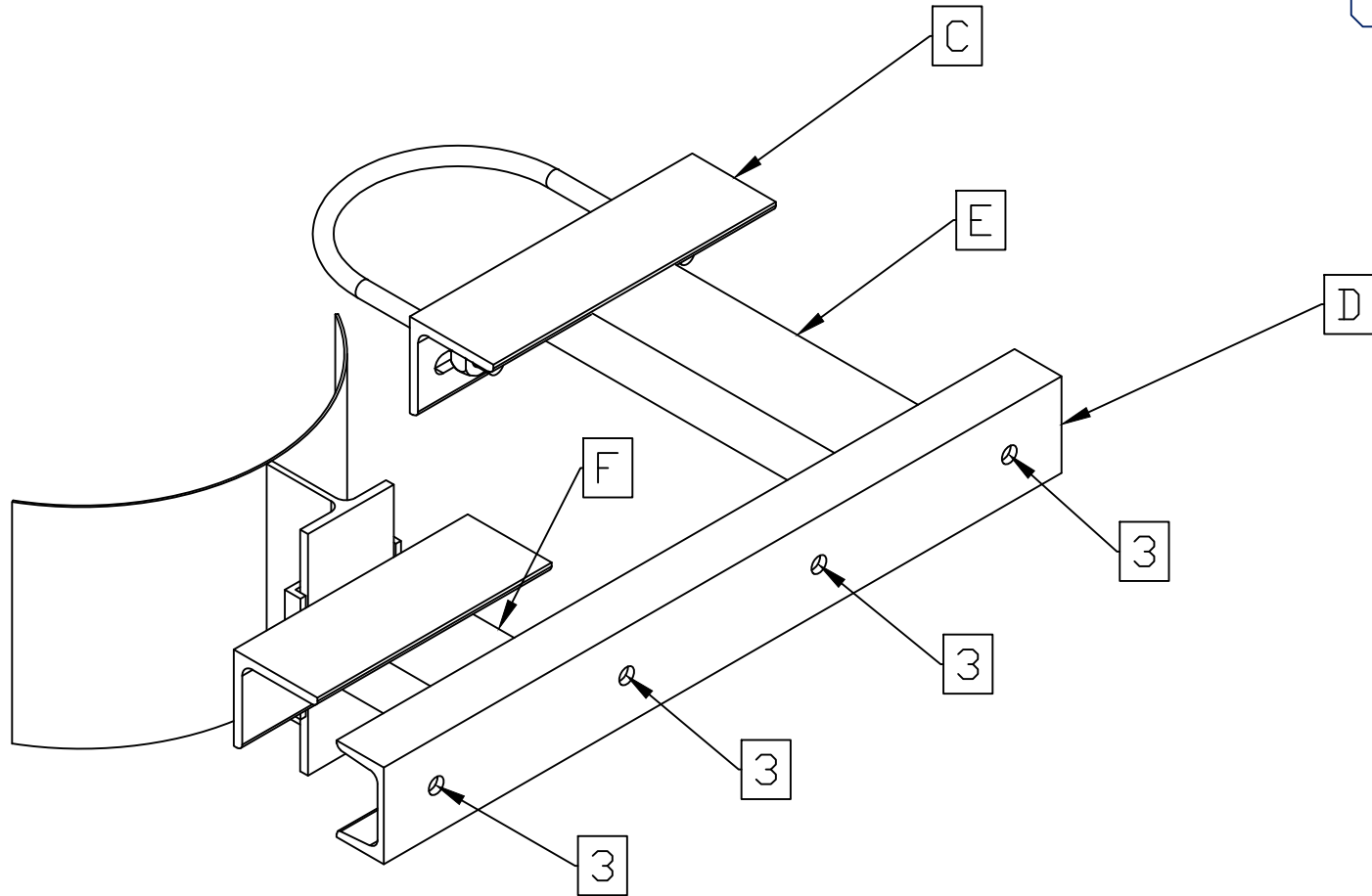
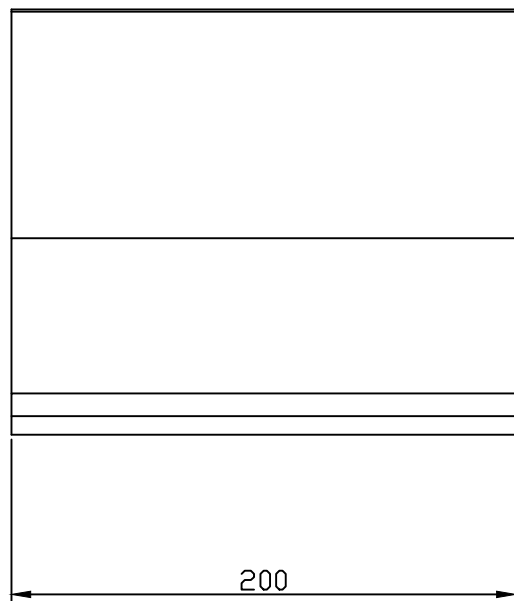
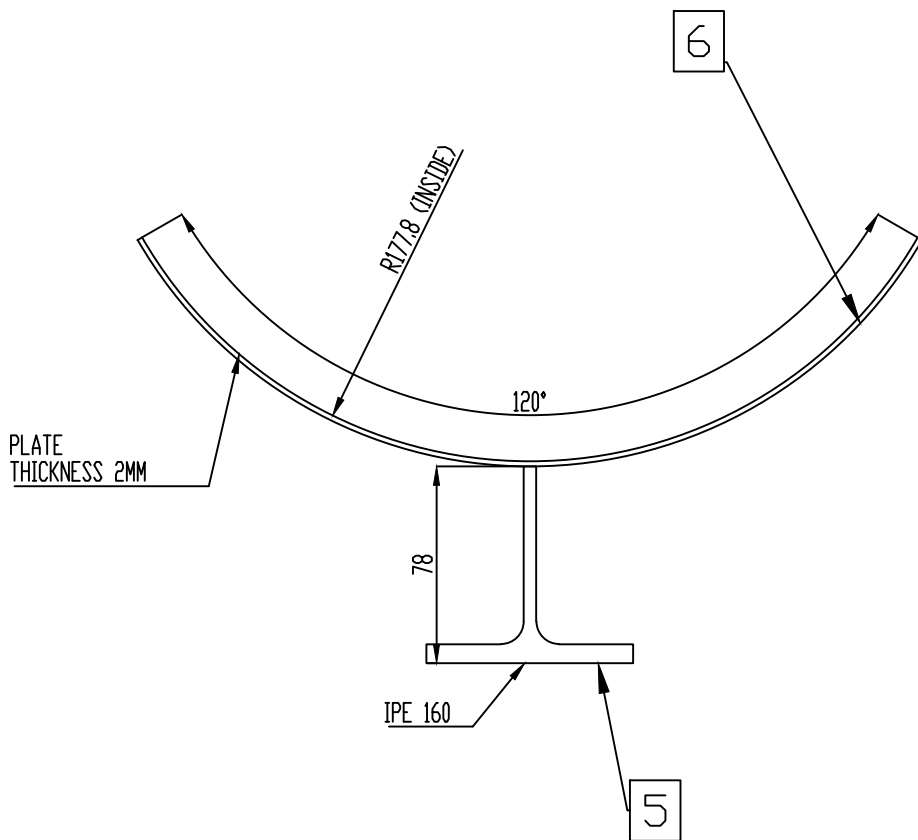


BILL OF MATERIALS			
ID	QT (Ud/M)	DESCRIPTION	MATERIAL
1	0.494	L 80x80x8	S235JR
2	1.173	UPN 80	S235JR
3	4	ANCHOR BOLT M12x120 8.8	8.8
4	0.2	S235JR L PLATE 15x20x5	S235JR
5	0.2	IPE 160	S235JR
6	0.2	AISI316L PLATE L=375mm (Thickness 2mm)	S235JR
8	2	U-BOLT DN150 M14 DIN 3570 with plastic cover	STEEL
11	4	NUT M14 8 DIN934	8
12	4	FLAT WASHER M14 St DIN125	St
13	2	AISI316L PLATE 100x70x1	AISI 316L

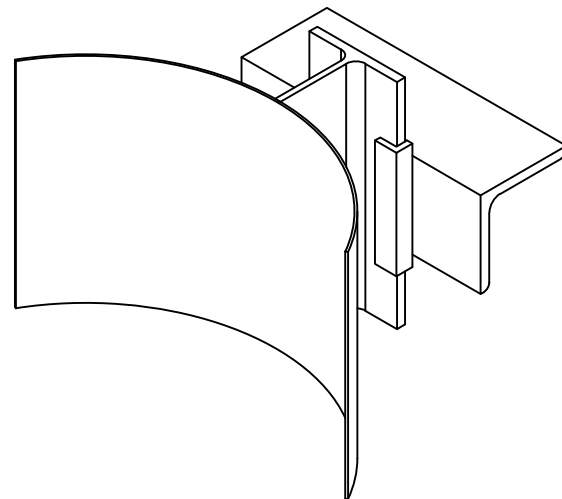
QTY: 1 UNIT



DETAIL A



DETAIL B



UNSPECIFIED WELDS:			
JOINT WITHOUT BEVEL	40%	JOINT WITH BEVEL	70% 70% 50-100 50-100
Note: Percentage (%) of the weld in relation to the smallest section of the weld joint.			
Non-individual tolerances according to DIN 7168.		Drawn 3D:	
		Drawn 2D:	
		Date: 1/12/2025	
		1st Dihedral	
		ISO 5456-2	
Oxygen Route		Rev. A	
TMT (FVRB-2,7-25)		N° Drawing: 2558-331X-TMT-ESR10-SUP15	
		Scale 1:40	Weight (kg)
		Sheet 1 of 1	Format A2

